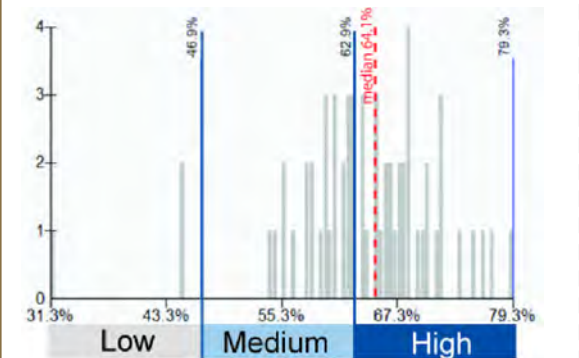


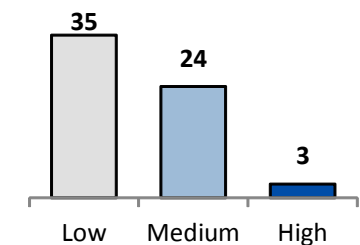
This map shows the labor force participation rate. About 63% of the population was in the labor force in the Metropolitan Planning Organization area census tracts.

Labor force information includes employment status for people age 16 or over who are working, or actively looking for work, on active duty of the U.S. Armed Forces, or are institutionalized. Employment data is asked of people for the "reference week", which is usually the week preceding the questionnaire completion.

The full range of data for each map has been divided into thirds to create low, medium, and high percentage categories. A histogram is also included to show that the data is not necessarily distributed equally across these three categories. About 4% of people in the labor force are in the 3 census tracts in the lowest percentage category.



The chart below shows the number of tracts in the Metropolitan Planning Organization Area that have low, medium, and high percentages.



Map date: 9/16/13 Map data: U.S. Census Bureau, ACS 2007-11, Table B23025.
 Caution: This map is based on imprecise source data, subject to change, and for general reference only.
 The work that provided the basis for this map was supported by funding under an award with the U.S. Department of Housing and Urban Development. The substance and findings of the work are dedicated to the public. The author and publisher are solely responsible for the accuracy of the statements and interpretations contained in this publication. Such interpretations do not necessarily reflect the views of the Government.

- Census 2010 Tracts
- Metropolitan Planning Organization Area boundary
- Urban Growth Boundaries

- Labor Force Participation Rate**
- Low: 31.3% - 46.9%
 - Medium: 47% - 62.9%
 - High: 63% - 79.3%